

STANDBY

TO REORDER CALL
COLONIAL BANKNOTE (800) 715-4010
Form: 9.5X4-10/20

4T9T1UE24RT298018

4T9T1UE24RT298018



MFD. BY: TULSA GAS TECHNOLOGIES, INC. DATE OF MFG: 06/3/2024

GVWR: 3175 KG (7000 LB) GAWR (EACH AXLE): 1588 KG (3500 LB)

TIRES ST205/75 RIMS R15 KPA/PSI SINGLE/DUAL

ST205/75 448 KPA (65PSI) SINGLE

VIN: 4T9T1UE24RT298018 TYPE: TRAILER

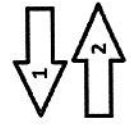
THIS VEHICLE CONFORMS TO ALL APPLICABLE U.S. FEDERAL MOTOR VEHICLE SAFETY STANDARDS IN EFFECT ON THE DATE OF MANUFACTURE SHOWN ABOVE

TIRE AND LOADING INFORMATION
RENSEIGNEMENTS SUR LES PNEUS ET LE CHARGEMENT



The weight of cargo should never exceed: 680 kg or 1,500 lbs.

TIRE	SIZE	COLD TIRES PRESS.	SEE OWNER'S MANUAL FOR ADDITIONAL INFORMATION VOIR LE MANUEL POUR PLUS DE RENSEIGNEMENTS
FRONT	ST205/75	448 KPA (65PSI)	
INTER	NONE	NONE	
REAR	ST205/75	448 KPA (65PSI)	
SPARE	NONE	NONE	



- 4T9T1UE24RT298018
- 4T9T1UE24RT298018
- 4T9T1UE24RT298018
- 4T9T1UE24RT298018
- 4T9T1UE24RT298018